

S. A. C. E. M.
 06.FEV.1990
 225, Av. Charles de Gaulle
 32001 NIMES Cedex

ECRITURES AUTOMATIQUES

pour piano

F. LAGNAU - 1987

269 = 1

8VA

Pédale sans interruption

Secheres Musiques

8va

Tjrs garder la pédale (serrer la corde -)

Avancer et reculer le doigt sur la corde pour faire jouer les harmoniques.

(serrer la corde)

(dasserrer progressivement)

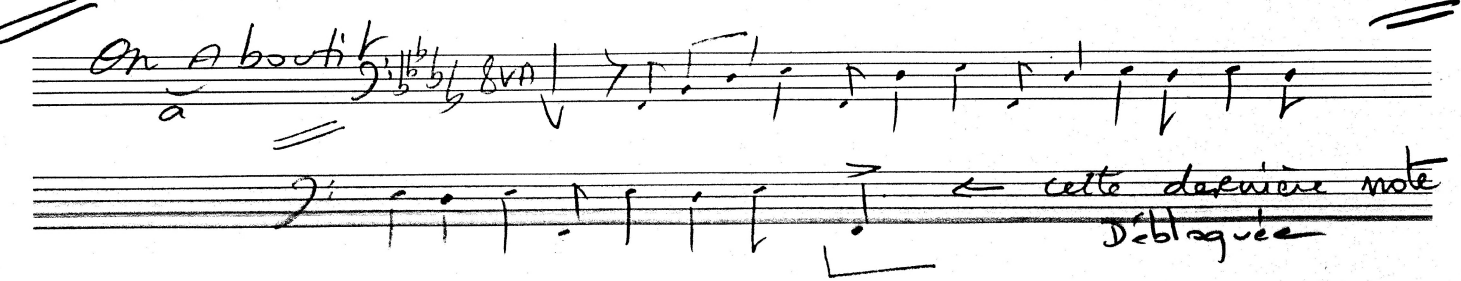
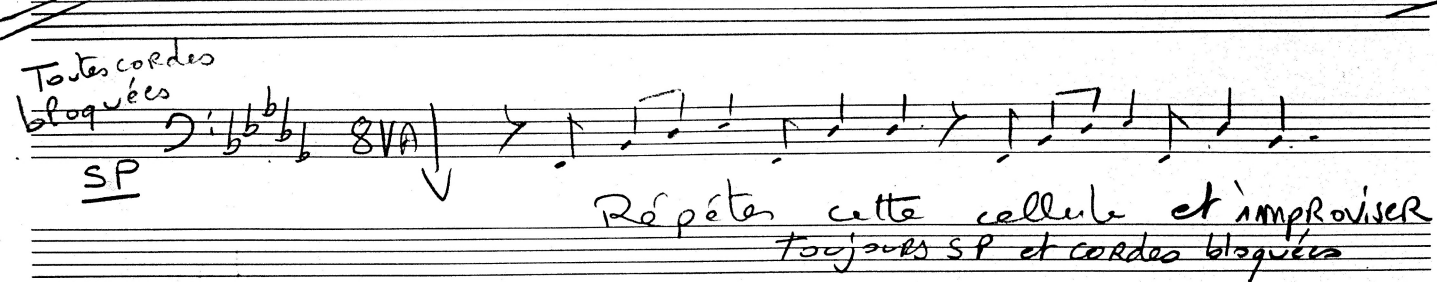
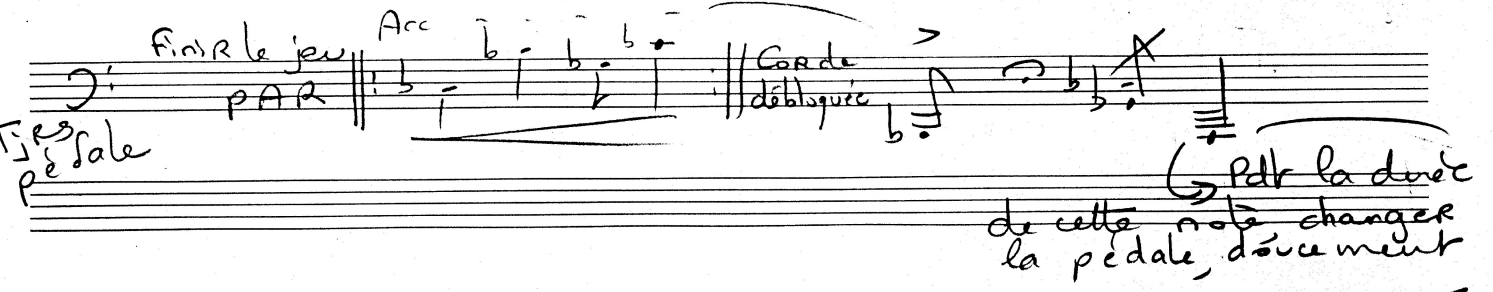
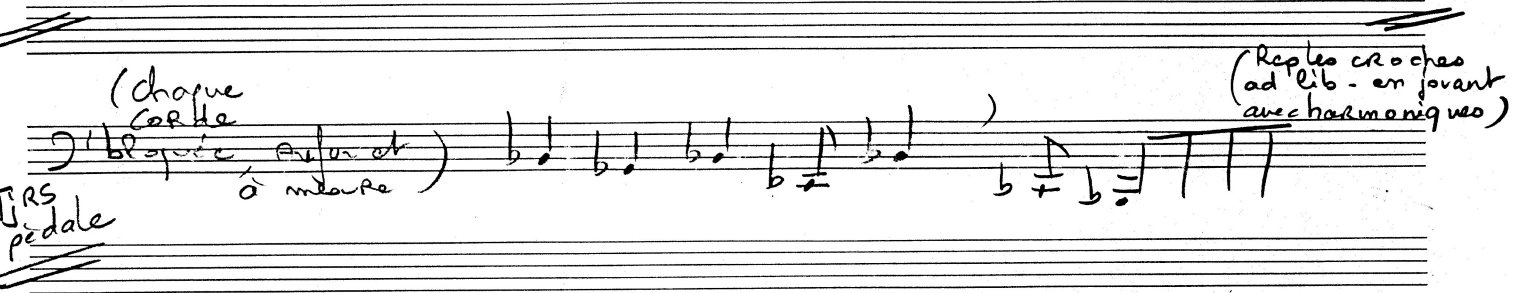
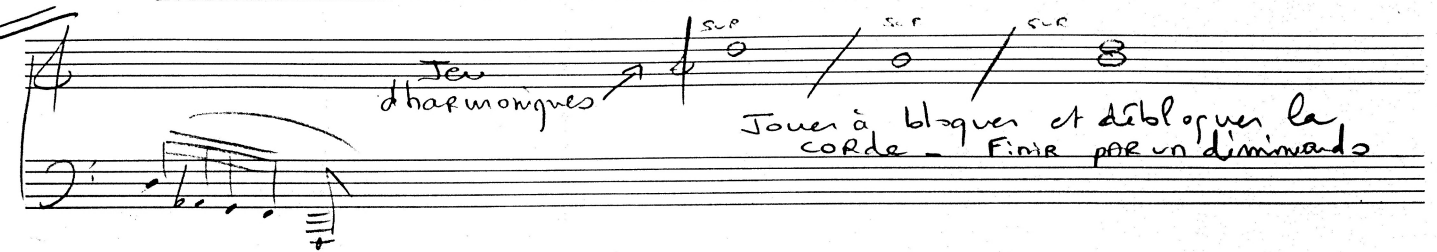
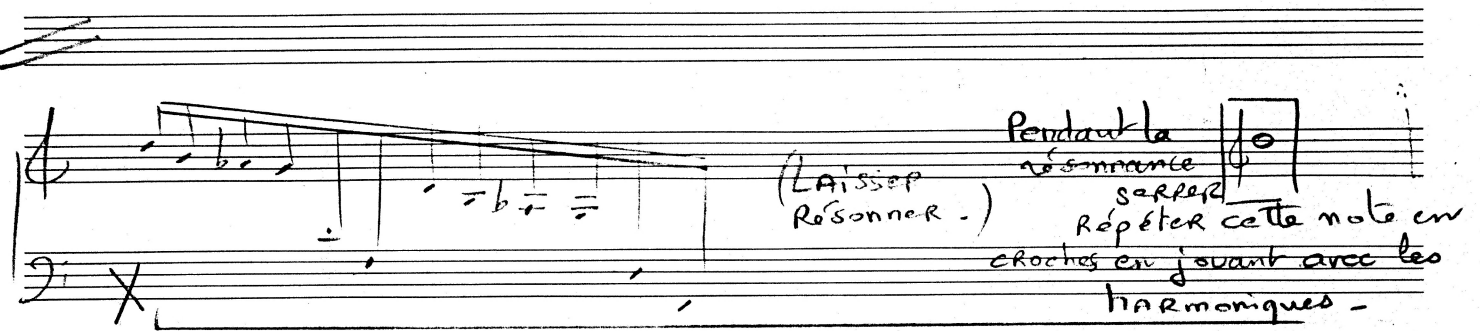
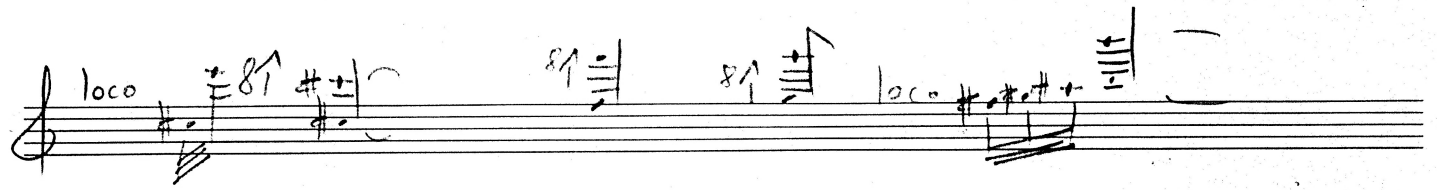
(corde tres serrée)

(id)

8va

Tjrs ds la même pédale qu'au début

1/



~ 69 = d.

SVA

Couper

résonance sur le départ au

Ped ad lib.

SVA

moderate

F subito

loco

Subito

SVA

loco

loco

loco

4b(10.10)

4b

SP

Sua

F

dim

simile

simile

Handwritten musical notation, first system. Treble and bass staves. Key signature: two flats. Dynamics: *mp*. Marking: *creac*.

Handwritten musical notation, second system. Treble and bass staves. Key signature: two flats. Dynamics: *mp*.

Handwritten musical notation, third system. Treble and bass staves. Key signature: two flats. Dynamics: *ff*. Marking: *b ±*.

Handwritten musical notation, fourth system. Treble and bass staves. Key signature: two flats. Dynamics: *ff*.

Handwritten musical notation, fifth system. Treble and bass staves. Key signature: two flats. Dynamics: *mp*. Marking: *simile*.

Handwritten musical notation, sixth system. Treble and bass staves. Key signature: two flats. Dynamics: *sub*, *f*, *p*.

Handwritten musical notation, seventh system. Treble and bass staves. Key signature: two flats. Dynamics: *f*, *p*.

Handwritten musical notation, eighth system. Treble and bass staves. Key signature: two flats. Dynamics: *dim*, *brav*, *largo*.

S.A.C.E.M.
06.FEV.1990
225 Av. Charles de Gaulle
92320 CHARENTON LE PONT (SEINE SAINE DISEN)

md Improvisation Free à partir d'éléments
des pages précédentes

mg - Walking BASS

md } Free Improvisation
mg }

Introduction progressive des rythmes;
Amenant impro
sur rythme de la cellule de départ:

DvRaut tout
Ce temps crescendo
d'expression et d'intensité.

Cette tension
PROGRESSIVE
Rejoint

md

mg

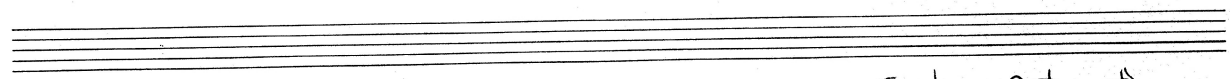
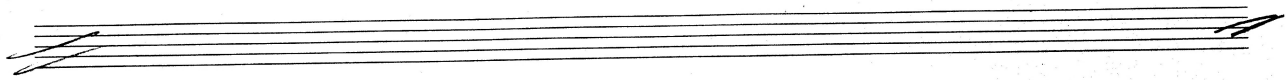
Handwritten musical score for the first system, featuring a treble and bass clef with various notes and rests.

Handwritten musical score for the second system, including a "dim" marking above the staff.

Handwritten musical score for the third system, including a "p" marking and a "sola" marking.

Handwritten musical score for the fourth system, including a circled instruction "(Laisser Résonner)".

Handwritten musical score for the fifth system, including performance instructions: "Rep ad lib", "en transformant", "mg dim", and "en".



Forêtus Automatique
F. Lagnan 7

nd
ng

Enfoncer silencieusement de j: à toutes les touches blanches avec le coude

nd
ng

CLUSTER de résonances continue

nd

ng

nd
ng

md

mg

mg

Enlever la
crosse en mettant
la pédale

md

mg

8↑

pédale toujours
enfoncée

(F. Lagnan
1987. EvRexp)

